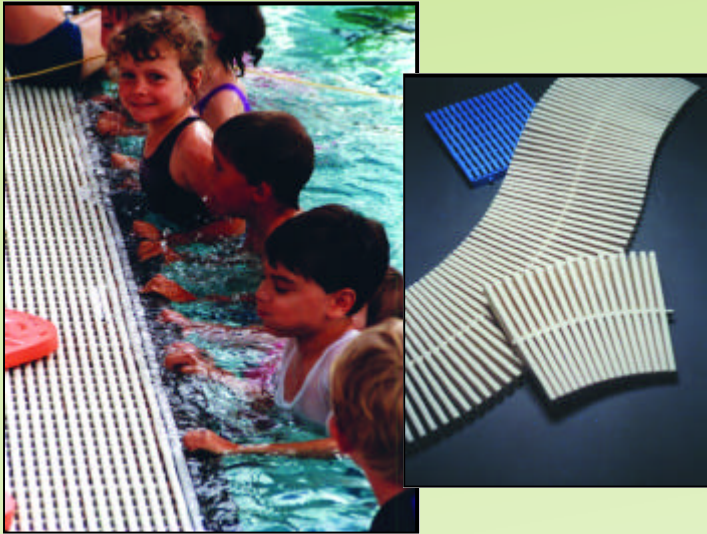


Perimeter Grating Systems



Transverse (flexible) Grate

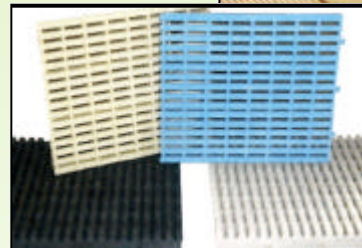
The SWIMPLEX transverse curved sectional grate, is manufactured with the same non-slip pattern, colours, and sizes as the longitudinal grate.

- This exciting new product is ideal for free formed pools and spas, resulting in an attractive, long lasting Wetdeck® edge to the pool.
- The grate is capable of forming tight curves to 800mm diameter if required.
- The transverse grate is available in the same colour range & widths as the longitudinal.

Longitudinal (rigid) Grate

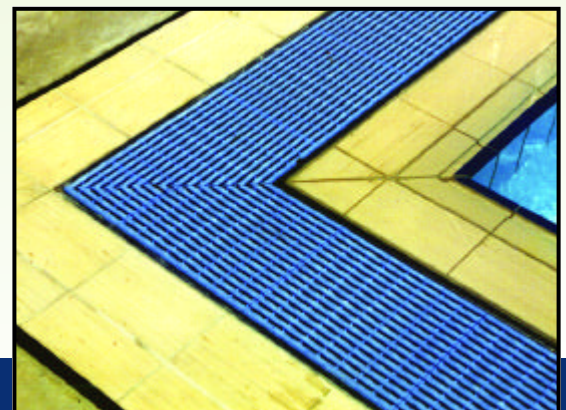
The SWIMPLEX Wetdeck® longitudinal grate has many design features which makes it more than suitable for use in competitive pools:

- Excellent wave breaking ability preventing water migration across the gutter. Easy end to end interlocking system in tile configuration
- A unique non-slip pattern that resists water entrapment on the grate surface.
- Manufactured from UV stabilised polypropylene.
- Stock colours are Off White, Pale Blue, Marzipan, and Charcoal.
- The structural members incorporated into the moulding eliminate the need for additional supporting members across the gutter and facilitates the dispersal of localised high loads.
- Childproof segments cannot be easily removed.
- Can be rebated and retro fitted into existing gutters.
- A stainless steel angle track with a rolled edge and height setting tabs is available.



Installation

- Each section of grate is 330mm long x 300mm or 350mm wide making it simple and easy to handle and mitre.
- Corners can be supplied welded to suit a particular application.

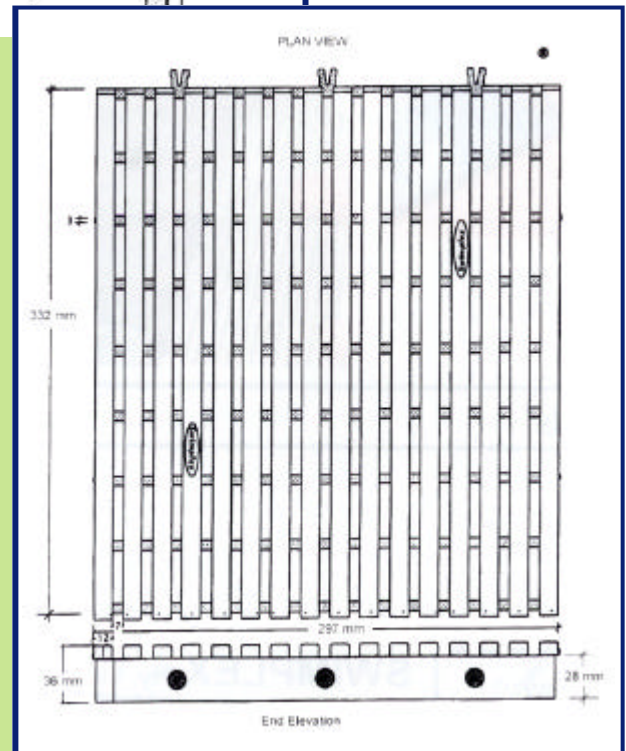
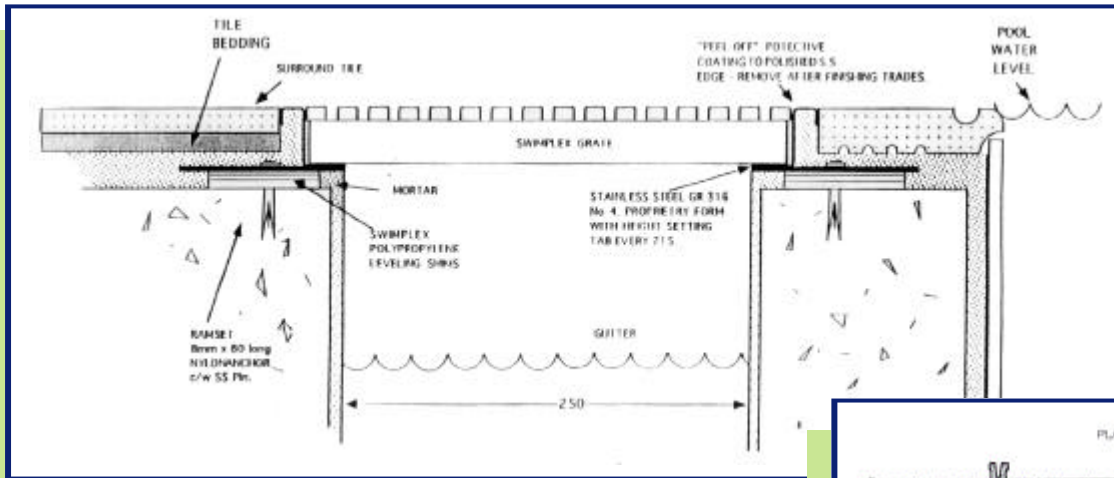


At a Glance:

- Truly amazing wave breaking ability
- Attractive non-slip surface
- Strong durable and UV stable
- Curved and freeform pools - no problems
- Can be cut and rebated to fit most applications
- 10 year guarantee
- A wide range of colours available



Technical Detail and Drawing



Technical Data

The Swimplex grate is moulded from GWM 101/77 toughened grade POLYPROPYLENE. Additive 77 provides for greatly increased UV protection.

The material features:

- Co polymer PP for good impact strength
- High Chemical resistance
- Excellent Heat stabilisation up to 10⁰C
- Excellent colourfast properties

SWIMPLEX AQUATICS Pty Ltd

Offices

32 Split Solitary Rd
Coffs Harbour NSW 2450

95 Griffin Rd
Orange NSW 2800

Phone

1300 796 759

Fax

1300 796 329

E-mail

sales@swimplex.com.au

Website www.swimplex.com.au

Typical Properties

Property	Test Method	Value	Units
Melt Flow Index	ASTM D1238-73 2.16kg's @ 230 ⁰ C	4.5	G/10min
Density	AS 1193 @ 23 ⁰ C	905	Kg/m ³
Flexural Modulus	ASTM D790-71 @ 23 ⁰ C	1.4	GPa
Tensile Yield Stress	ASTM D638-77A @ 23 ⁰ C	29	MPa
Izod notched Impact	ASTM D256 @ 23 ⁰ C @ 0 ⁰ C	120 75	J/m notch J/m notch
Rockwell Hardness	ASTM D785-65 R Scale	92	
Heat Distortion Temp	ASTM D648-65 @ 455 kPa @ 1820 kPa	100 60	⁰ C ⁰ C